



جامعة التقنية والعلوم التطبيقية بعبري
University of Technology and Applied Sciences - Irbid

Connect to UTAS-WIFI

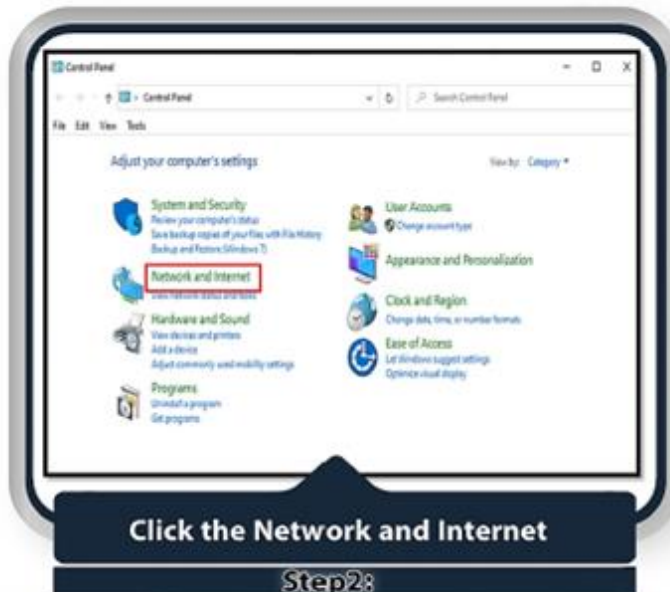
from your personal laptop
(non-domain laptop)





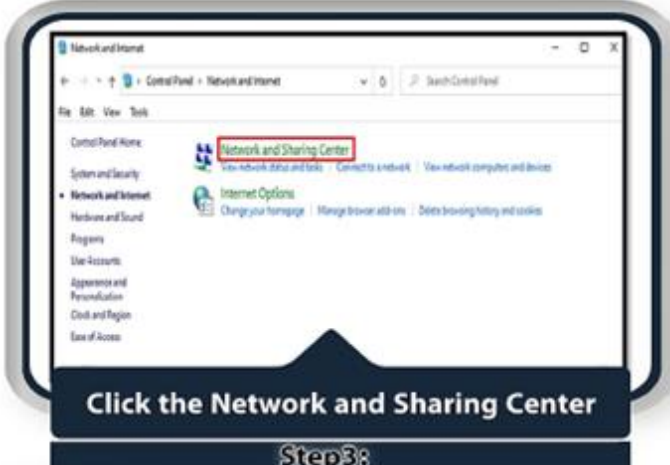
Go to control panel

Step1:



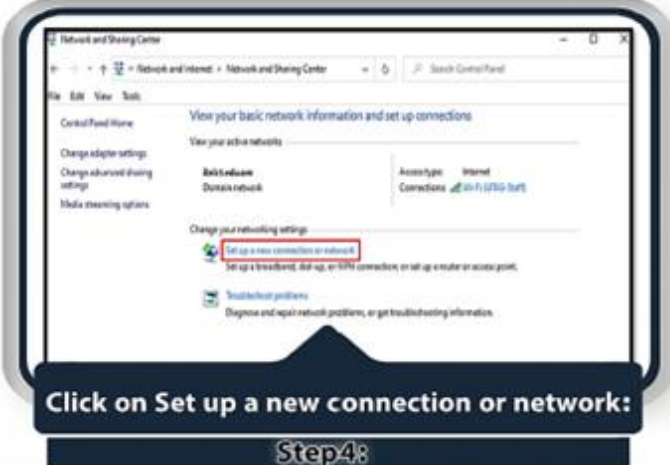
Click the Network and Internet

Step2:



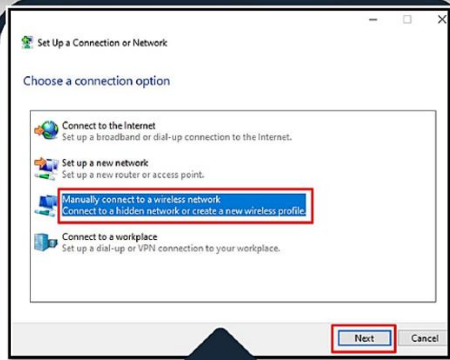
Click the Network and Sharing Center

Step3:



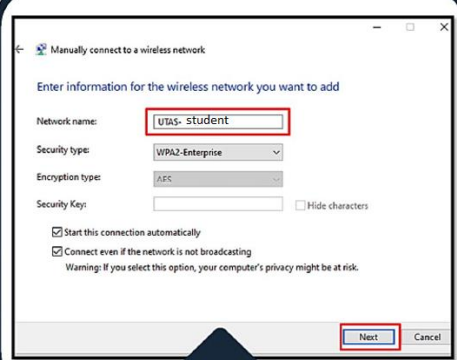
Click on Set up a new connection or network:

Step4:



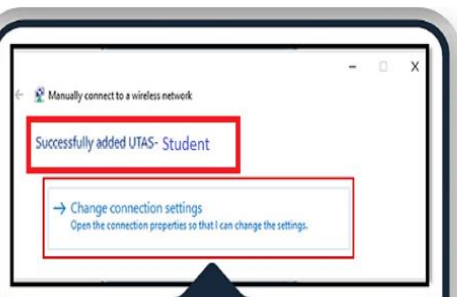
Click on manually connect to wireless Network and click next:

Step 5:



Fill the below information (UTAS-Staff) is case sensitive and click next:

Step 6:



Click on change connection settings.

Step 7:



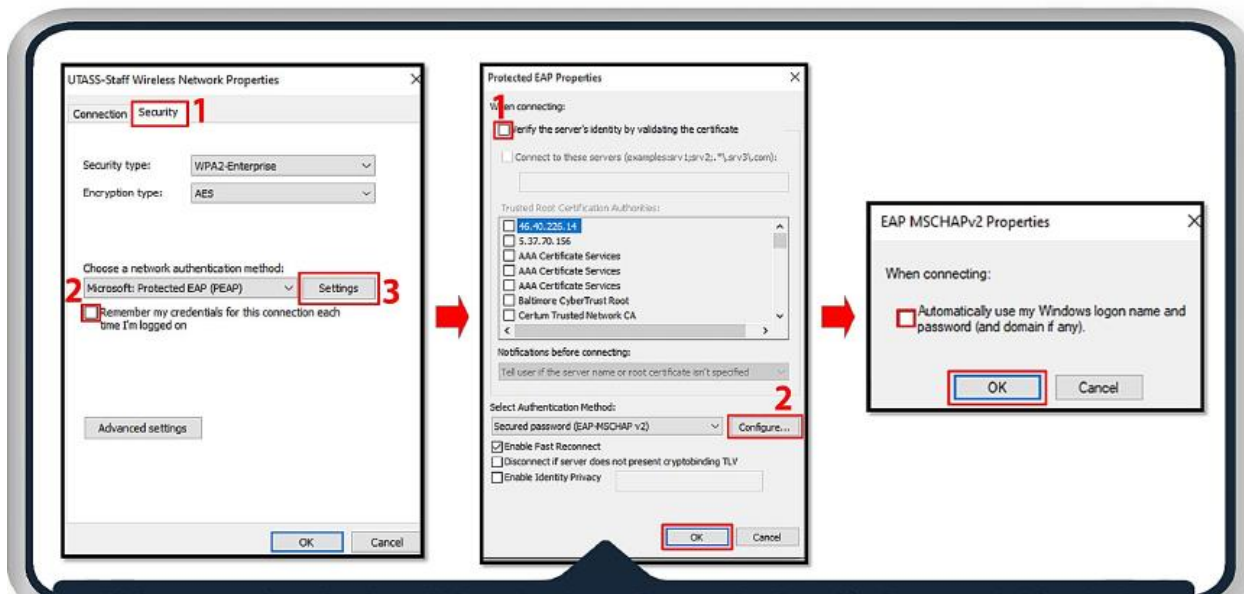
Click on security tab, then uncheck remember my credentials and go to advanced settings.

Step 8:



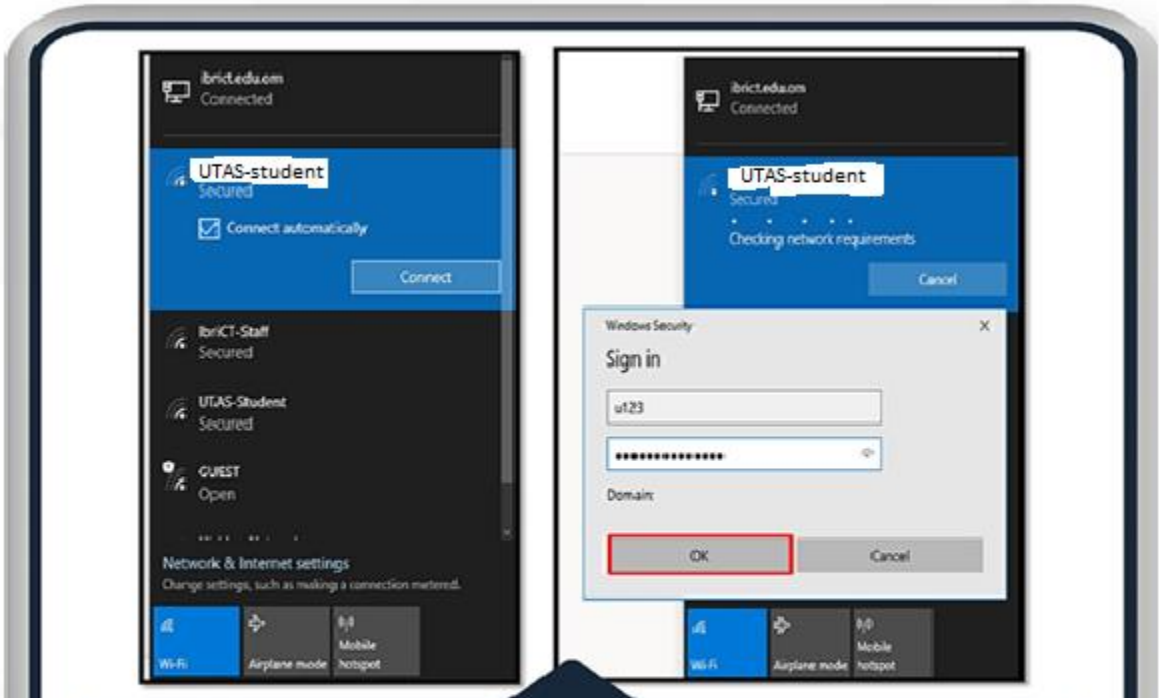
Under advance setting select the following.

Step 9:



Click on security tab, then click on Settings, then uncheck verify the server's identity by validating the certificate. Follow the below options and click ok.

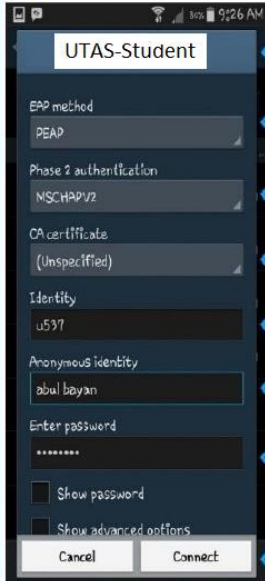
Step 10:



Once all the setting is done, connect to UTAS-Student and use your username & password.

Step 11:

**Wireless Setting for Android to
for students
Connect UTAS-Student**



- Select UTAS-Student
- Select PEAP Method
- Select MSCHAPV2
- Keep it unspecified
- Use your college user name
- Type your first name
- Use your college password
- Click connect



Wireless Setting for MAC , IPHONE or IPAD to connect IbrICT-Student



Step 3. Click on accept

- Select
- Step 1. for Stdents: **UTAS-Student**
 - Step 2. Put the login information,
Student: COLLEGE ID card number & PASSWORD
Staff: U account and password

Note: Please feel free to contact CSS help desk if you face any issues with WIFI devices