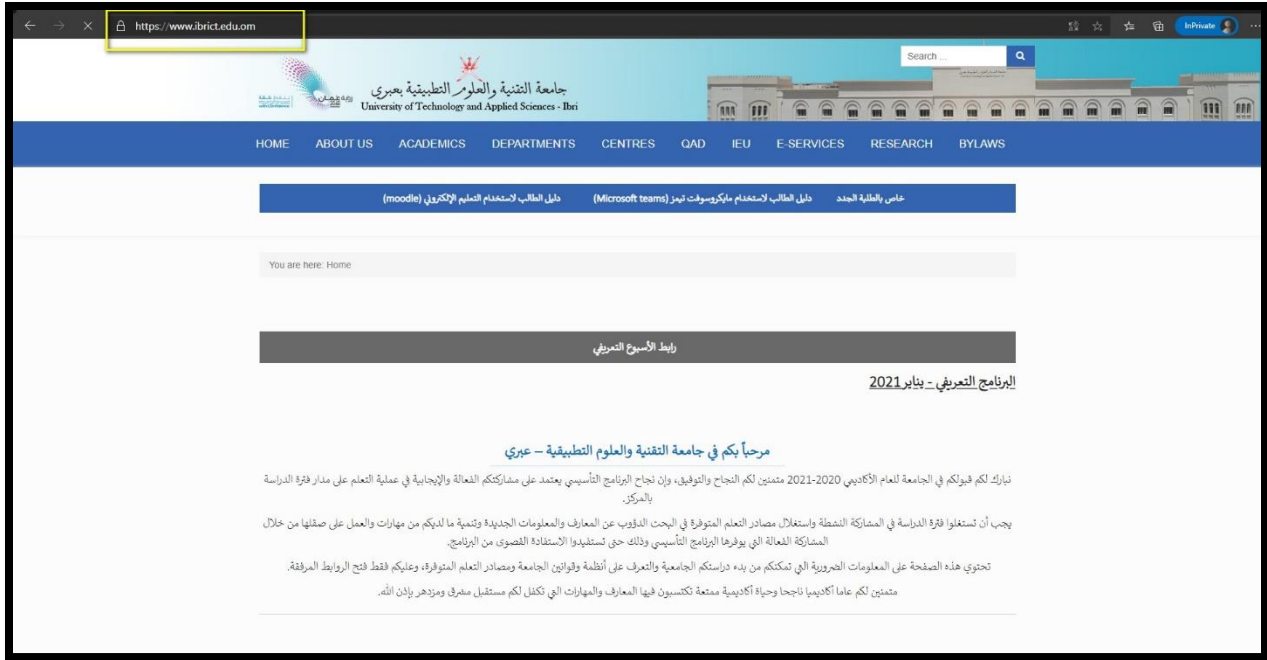
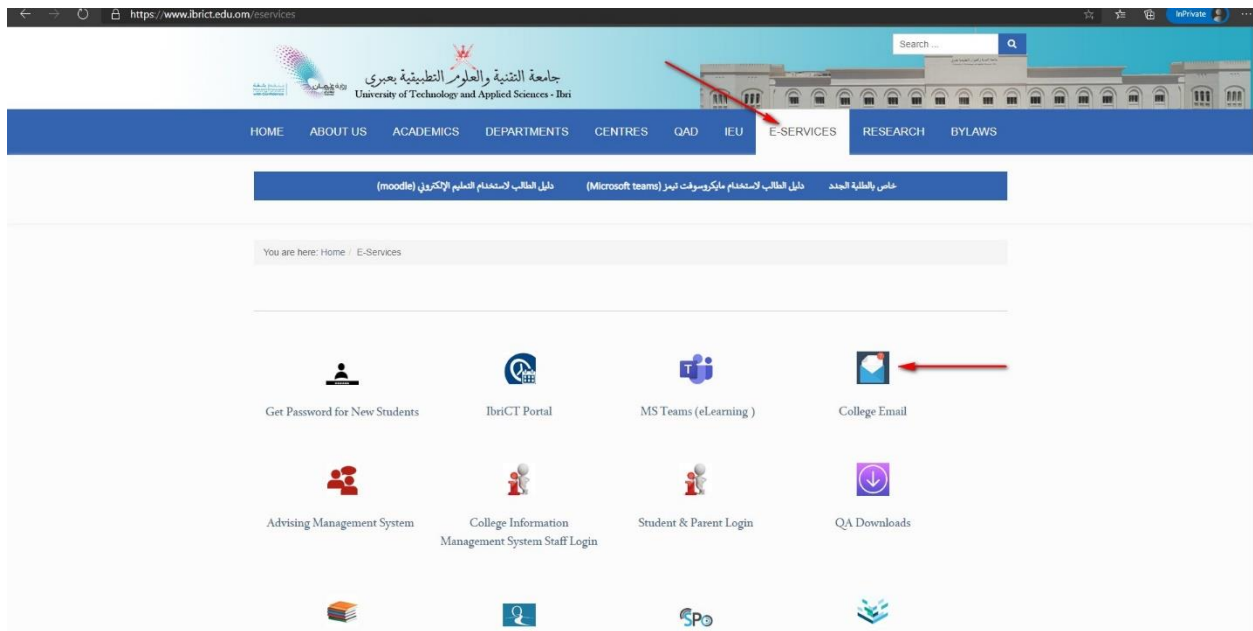


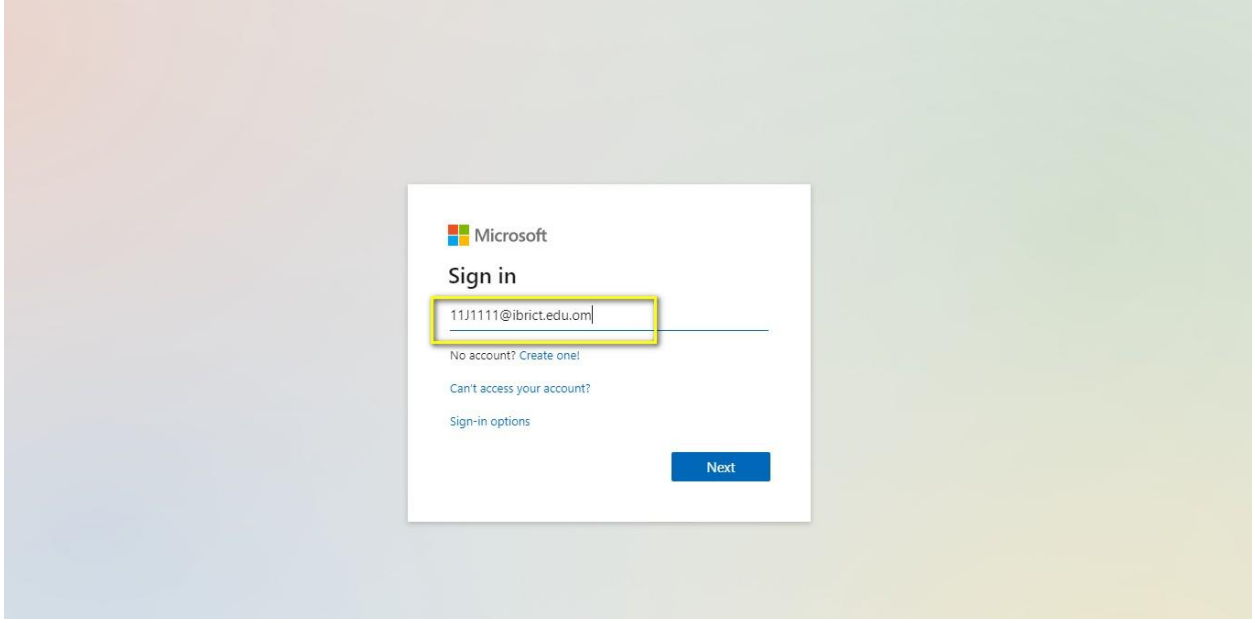
أولاً: الذهاب الى موقع الجامعة كما هو موضح بالصورة أدناه



ثانياً: الذهاب الى الخدمات الإلكترونية والضغط على البريد الإلكتروني

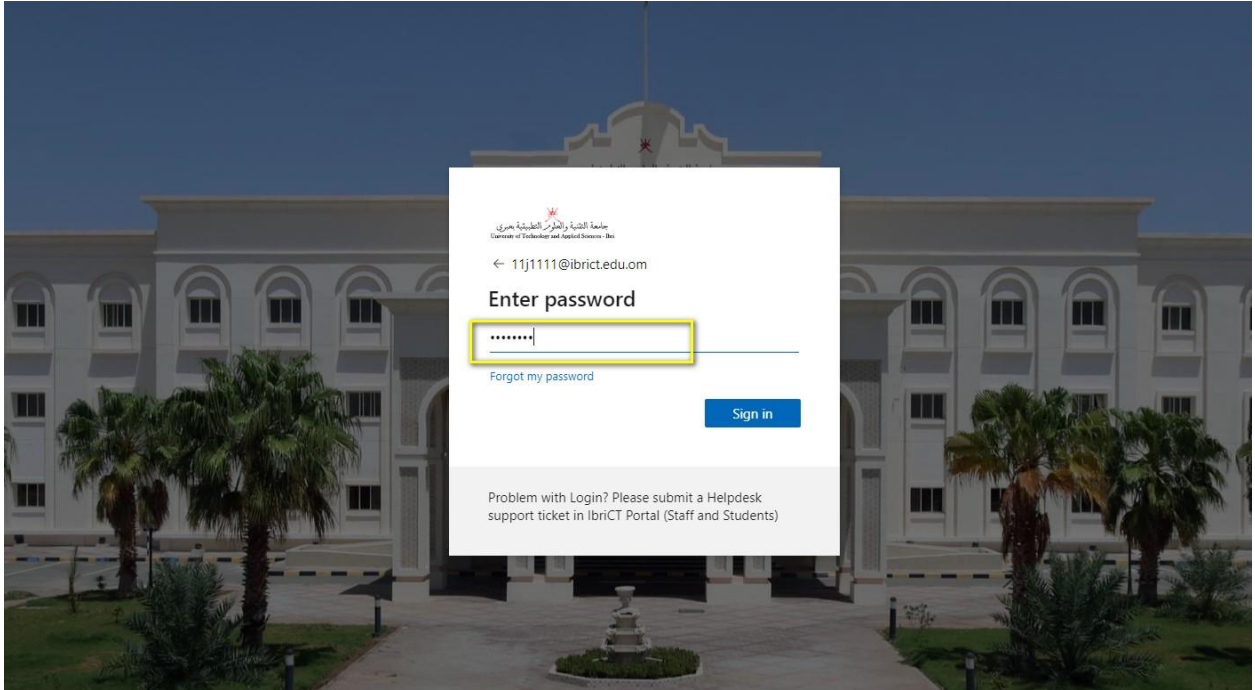


ثالثا: إدخال البريد الإلكتروني الخاص بالجامعة



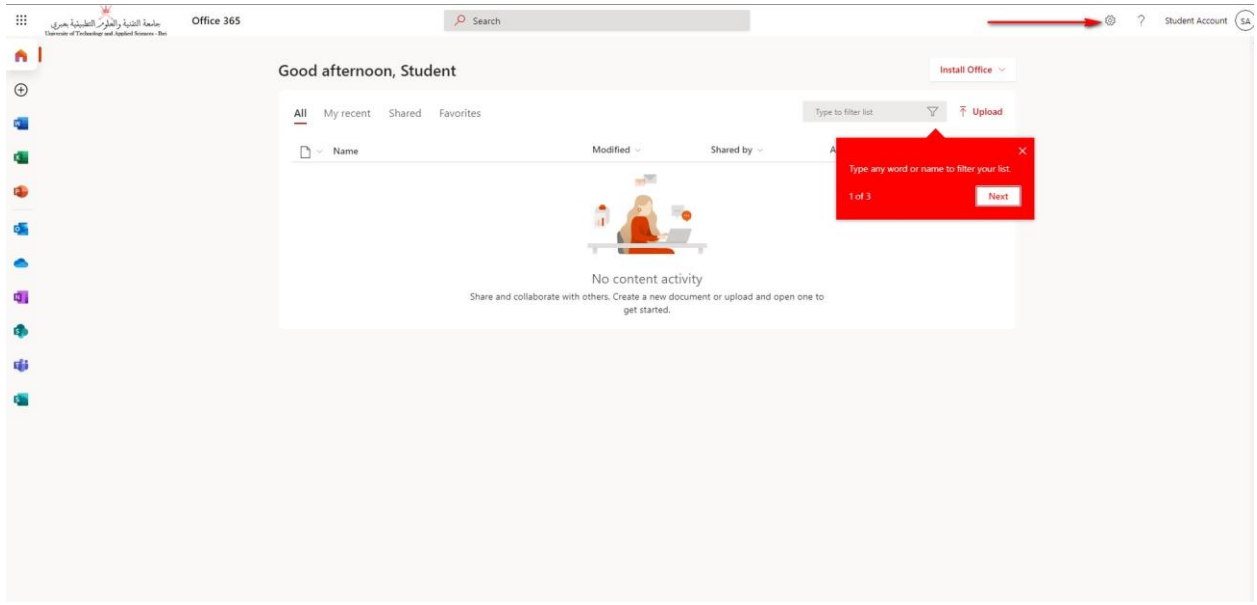
A Microsoft sign-in screen with a white background and a blue gradient at the bottom. The Microsoft logo is at the top left. Below it, the text "Sign in" is displayed. A text input field contains the email address "11j1111@ibriict.edu.om" and is highlighted with a yellow border. Below the input field, there are three links: "No account? Create one!", "Can't access your account?", and "Sign-in options". A blue "Next" button is located at the bottom right of the sign-in area.

رابعا: إدخال الرقم السري

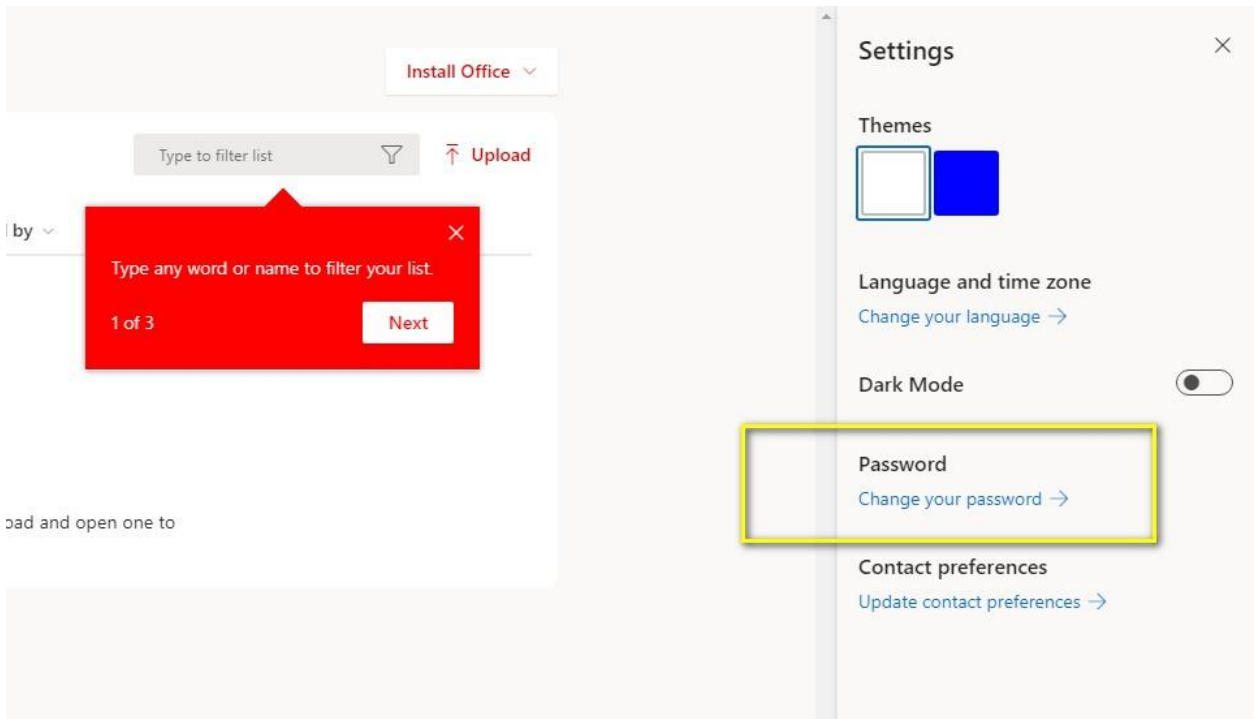


A password entry screen overlaid on a background image of a university building. The screen has a white background. At the top, there is a logo and the text "جامعة التقنية والعلوم التطبيقية بحري" (University of Technology and Applied Sciences - Hail) and "University of Technology and Applied Sciences - Hail". Below this, the email address "11j1111@ibriict.edu.om" is displayed. The main heading is "Enter password". A text input field contains a masked password "....." and is highlighted with a yellow border. Below the input field, there is a link "Forgot my password". A blue "Sign in" button is located at the bottom right of the password entry area. At the bottom of the screen, there is a footer text: "Problem with Login? Please submit a Helpdesk support ticket in IbrICT Portal (Staff and Students)".

خامسا: اضغط على الأيقونة الخاصة بالاعدادات كما هو مشار لها بالسهم بالصورة أدناه:



سادسا: اضغط على تغيير الرقم السري كما هو موضح:



أخيرا: قم بإدخال الرقم السري القديم ومن ثم الجديد ومن ثم ادخال الجديد مره ثانية للتأكيد

change password

Strong password required. Enter 8-256 characters. Do not include common words or names. Combine uppercase letters, lowercase letters, numbers, and symbols.

User ID

11j1111@ibricl.edu.om

Old password

Create new password

Confirm new password

cancel